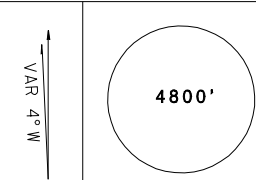
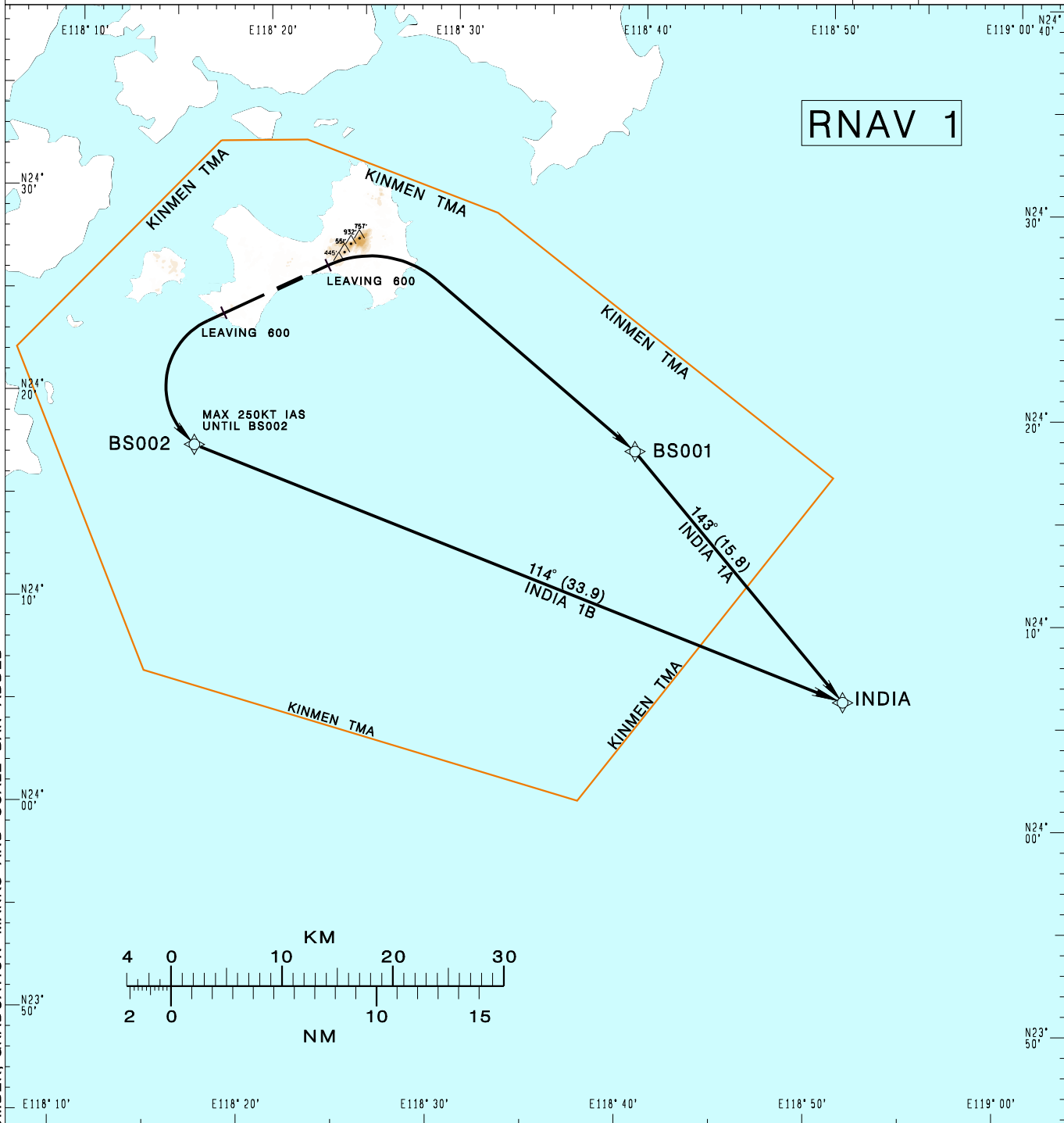


**金門/尚義機場**  
KINMENSHANGYI AD

RCBS SID  
INDIA 1A RNAV (RWY06)  
INDIA 1B RNAV (RWY24)

KAOSIUNG APP 124.6 133.1	KINMEN TWR 118.0 126.2	ATIS 127.2	
Apt Elev: 56'	Trans Level: FL130	Trans Alt: 11,000'	
BEARINGS ARE MAGNETIC; DISTANCES ARE NAUTICAL MILES; ELEVATIONS, HEIGHTS IN FEET			



CHANGES: NEW PAGE NUMBER, GRADUATION MARKS AND SCALE BAR ADDED

**INDIA ONE ALFA RNAV DEPARTURE**  
Depart RWY HDG until leaving 600ft, turn right direct to BS001, INDIA.

**INDIA ONE BRAVO RNAV DEPARTURE**  
Depart RWY HDG until leaving 600ft, turn left direct to BS002, INDIA.

- NOTE**
- INDIA 1A minimum climb gradient: 6.8% (414ft/NM) until 2000ft.
  - INDIA 1B speed restriction: Max 250KT IAS until BS002.
  - Critical DME & DME gap not surveyed.
  - ATS surveillance required.